



East Smithfield, London, E1W

BUTLER & STAG



**Enviably located one bedroom apartment, just moments from Tower Hill underground station, St Katharine Docks and iconic London landmarks such as the Tower of London and Tower Bridge.**

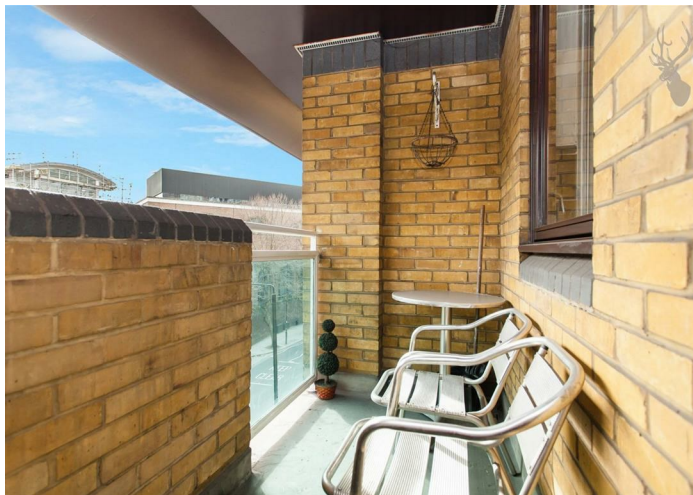


- Smart One Bedroom Apartment
- Tower Hill Location
- Dual-Aspect Reception
- Furnished
- Fourth Floor
- Private Balcony
- St Katharine Docks Moments Away
- Available from 23rd May 2026

This smartly presented property is situated on the fourth floor of a well-maintained development and is ideally suited to a city professional or couple seeking a home in a historic pocket of London.

Comprising of a spacious dual-aspect living room with direct access to a private balcony, a separate kitchen, generous double bedroom and contemporary shower room, this excellent apartment is offered furnished from the 23rd May.

EPC Rating C  
Council Tax Band C

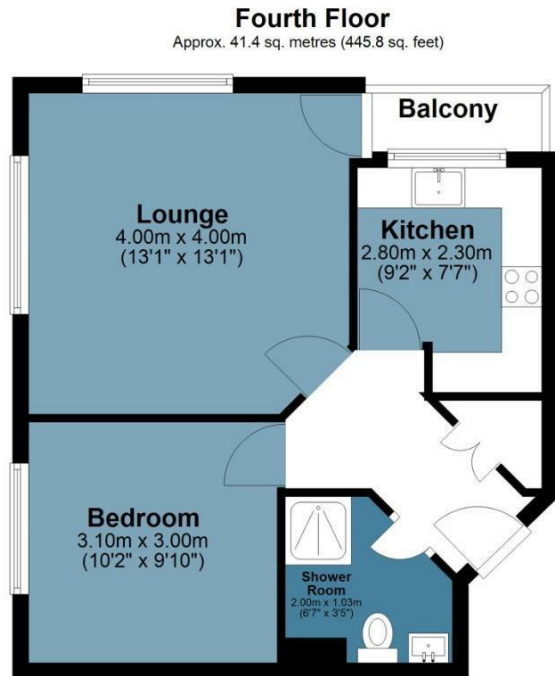




## East Smithfield

Approx. Gross Internal Area 41.4 Sq M ( 445.8 Sq Ft )

BUTLER & STAG



Measurements are approximate and for illustration purposes only. While we do not doubt the accuracy and completeness, we advise you conduct a careful independent assessment of the property to determine monetary value.  
© @modephoto.uk www.modephoto.co.uk

BUTLER & STAG

☎ 020 8102 1236

🏠 508 Roman Road, Bow, London, E3 5LU

✉ bow@butlerandstag.com

[www.butlerandstag.uk](http://www.butlerandstag.uk)

IMPORTANT NOTICE - These particulars have been prepared in good faith and they are not intended to constitute part of an offer or contract. We have not performed a structural survey on this property and the services, appliances and specific fittings have not been tested. All photographs, measurements, floor plans and distances referred to are given as a guide and should not be relied upon.